

**DRAFT Minutes of Tāmanuhiri Tutu Poroporo Trust
and Hinenui Whānui Charitable Trust
Special General Meeting
Wednesday 3 May 2023**

| | | | |
|------------------------------|---|--------------------|--------|
| Venue: | Te Kura o Te Muriwai | Time Start: | 5:30pm |
| Trustee Participants: | Pauline Hill (Chair), Parekura Brown Jnr, Tanith Wirihana Te Waitohioterangi | | |
| Staff in attendance | Doug Jones (Chief Executive) Annalisa Te Whaiti-Whaitiri, Bella Hawkins, Haven Te Hau, Kahurangi Moke, Lissa-Mia Nepe, Melonie Brouwer (minute taker), Roanne Jones. | | |
| Guest in attendance | Callum Thompson, Auditor for Graham and Dobson Chartered Accountants | | |
| Online participants | David Stone (Trustee) Chrissy Ngerengere (Staff) | | |
| In Attendance: | As per attendance registers | | |
| Apologies: | Maia Gibbs (Trustee) Tangiwai Wilson (Trustee) Jo Pleydell (Trustee) Beth Tupara-Katene (Staff) Mangu Kemp Snr (Staff) Nanny Jayne Renata Dwayne Pomana Jean Pomana Kamaia Pomana Bobby Robin Kay Robin Jody Toroa Wings Waihi Steven Hooper Ransley Whaitiri Georgina Smith | | |

Mihi and karakia by Parekura Brown Jnr.
Welcome from Doug and Pauline as Chair of the TTPT Board.

1. **Apologies** – noted
2. **Motion to appoint Graham and Dobson Chartered Accountants as our Auditor.**
Moved: Dawn Pomana **Seconded:** Annalisa Whaitiri **Carried**

Callum from Graham and Dobson was in attendance, introduced himself and gave a korero about why we were required to appoint a new auditor.

Our organisation is growing with a higher level of reporting required. There will be a transition into the new standards from tier 3 to tier 2. Part of that process will be to audit this year's figures to provide comparatives for next year's audit.

3. **Updates on our mahi and presentation on the night.** Doug spoke to this item.
Ngā Kaimahi Hou

Doug acknowledged our staff that were at the garage, namely Bu, Maria and Annalisa and their tireless mahi to get our garage up and running.

A warm welcome to our new kaimahi.

- Kahurangi Moke – *Communications and Events Advisor*
- Haven Te Hau – *Kaiwhanake – Development Advisor*
- Matene Blandford – *Retail Assistant Manutuke Fuel and Store*
- Hailey Earnshaw – *Retail Assistant Manutuke Fuel and Store*

Both Kahurangi and Haven were in attendance and introduced themselves and gave their whakapapa back to Tāmanuhiri.

3a. Civil Defence update. Presentation on the night. Doug spoke to this item.

Points from presentation.

- 13 Feb Cyclone Gabrielle hits
- 18 Feb Turanga Health – starlink and Cash
- 19 Feb Civil defence hui at Muriwai Marae
- 26 Feb Civil defence hui at Muriwai Marae
- 30 Mar Haumarū debrief with TTPT
- 19 Apr Civil defence and resilience wananga at Muriwai Marae

Three Key questions we need to answer:

1. Who will form our emergency team?
2. Where should we go?
3. What resources do we need?

Key themes from previous hui so far:

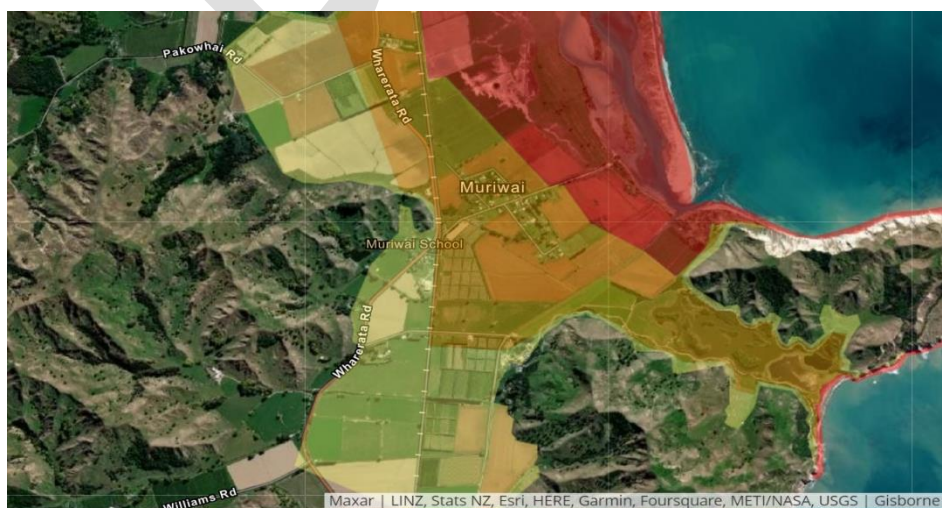
1. Emergency plan
2. Communications
3. Emergency infrastructure and supplies.
4. Community preparedness
5. Taonga protection
6. Future proofing regional infrastructure

WHO?

- We need at least 5 (real time decision makers on the ground)
- Fit and Healthy, Calm heads, from across the village/s, good communicators
 - Including rangatahi for succession planning
- TTPT will run an expression of interest process – feedback required.

WHERE? Map below showing:

- Spatial mapping required, overlaid with waahi tapu and good access for whanau
- Some area's suggested Pakowhai, Rauweka, Te Kopua, Tawatapu
- Need multiple sites depending on the event



Comment/Questions/Feedback from floor:

- Noted that Pakowhai whenua is in the red zone. When we have an easterly all the whenua is absorbed with water, that traverses across Pakowhai.
- Are there stakeholders that we can partner with to research the impacts and any mitigation actions or activities that we can do to try and lessen the impact ie GNS Science.
- We need an evacuation area identified ASAP, this will provide peace of mind to the whānau that live in the village.
 - Potential area identified is Raueka. Bella commented that there was an opportunity to do a tiki tour of the Raueka farm.
 - Discussions with Pakowhai and Maraetaha Chairs about potential sites as well
 - There may be multiple sites depending on the event.
- How can we fast forward progress to initiate a plan?

Noted that Te Karaka are considering moving Rangatira Marae and potentially the Te Karaka village.

WHAT?

1. Communications including warning system (siren or app alerts or ringing of the school bell)
2. Emergency planning specific for Ngai Tamanuhiri
3. Emergency supplies including: tracks, civil defence hubs and buildings, containers, IRB boats, 4WD vehicles and unimogs, mobile satellite and solar energy, PPE, kai and wai for 200 people for 3 days
4. Community preparedness – training and wananga i.e water safety and maara kai, water tankers, building relationships with others in emergency services, home + contents + health insurances
5. Taonga protection – Marae, urupa, waahi tapu, Te Wherowhero me Te Kuri, Mahinga kai including marine monitoring
6. Regional Infrastructure – roading, bridges, water infrastructure, waste infrastructure, floodbanks and coastal erosion, rail etc

Next steps:

- EOI process to select the team and do training
- Seek funding to deliver on the 6 focus areas
- Support Haumaruru roopu to manaaki whanau in the next 3 months
- Stay connected with whanau as we progress the plan

Comment/Questions/Feedback from floor:

- Handouts from 'Get Ready.govt.nz – Make a Plan for Households' were made available at the hui.
- Suggestion from Candice was to have conversations with the schools your tamariki attend, particularly in town, to see what their Emergency Response Plan.
- Enjoyed last wananga and would like conversations to continue, feels like we're a part of it and having input.
- Question asked, where is the rest of the village? Unfortunately, if people don't want to be saved then we can't force them to move or save themselves. Everyone needs to be prepared and have a plan.
- Noted that there was another Kaupapa at the pa.

4. General Business

- 4a. TROTAK are pushing whānau to complete their census.
- 4b. Opening time of garage is 8:30am, why isn't it open earlier? *Doug spoke to this and commented that we are unable to find staff to work those hours.*

There being no further business, the Special General Meeting concluded at 6:20pm.

Karakia Whakakapi – Parekura Brown Jnr.

Names transposed from original attendance registers taken at the Special General Meeting held on Wednesday 3 May 2023.

| |
|---|
| <i>Annalisa Te Whaiti-Whaitiri</i> |
| Athena Emmerson |
| <i>Bella Hawkins (Hooper)</i> |
| Candice Gate |
| <i>Chrissy Ngerengere (online)</i> |
| Daiana Kemp |
| <i>David Stone (online)</i> |
| Dawn Pomana |
| Doug Jones |
| <i>Haven Te Hau</i> |
| Ihipera Whakataka |
| Jackie Peterson |
| Kaa Keefe |
| <i>Kahurangi Moke</i> |
| Keita Morgan |
| <i>Lissa-Mia Nepe</i> |
| M Robin |
| <i>Mel Brouwer</i> |
| Nat Waihi |
| Parekura Brown |
| <i>Parekura Brown Jnr</i> |
| <i>Pauline Hill</i> |
| <i>Roanne Jones</i> |
| Sasha Cunningham |
| <i>Tanith Wirihana Te Waitohioterangi</i> |
| Willy Smith |