

BESPOKE

pronounced. /bi-spok/

adj. **made to the clients specifications**



WELCOME

Welcome to Issue 01 of **BESPOKE**, your personalised publication that keeps you informed on the progress of your property projects.

We believe that effective communication is a key component in all successful relationships and we want to ensure that all of our clients are kept up to date throughout the design and construction process. As a result we have developed **BESPOKE**, a client specific publication that will be forwarded to each of our clients on a regular basis to ensure that all key stakeholders are kept informed.

Enjoy!

JOB NAME
ISSUE #01 NOVEMBER 2012

Tamanuhiri Road
Muriwai
Gisborne

Client Contact – Jody Toroa

STAGE 1 – CONDITION & DEVELOPMENT REPORTS

This job was completed in August 2012. It included the conservation/restoration works to Waiari.



It has given the Project team a good overall view of the complex and where we need to head. This is the masterplanning document.

STAGE 2 - HALL

This job is almost complete. The finishing touches are going on, and the Hall façade has a new lease of life.



STAGE 3 - WHAREPAKU

This job is 2/3 through working drawings. Progress was temporarily stalled due to negotiations with the Kohanga. A revised Plan has been furnished, A44 is currently awaiting approval from Marae Trustees before finalising documents for Tender and Building Consent. A44 needs this by 10th December 2012.

STAGE 4 – KOHANGA

This job is tied to the Wharepaku Project. Relocation options are being considered.

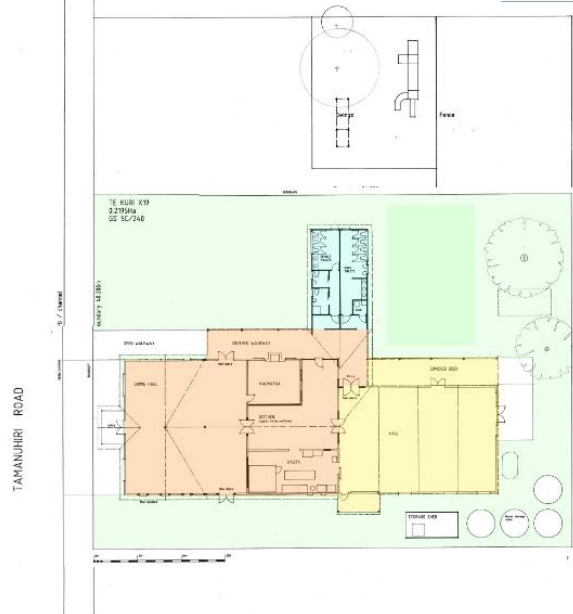
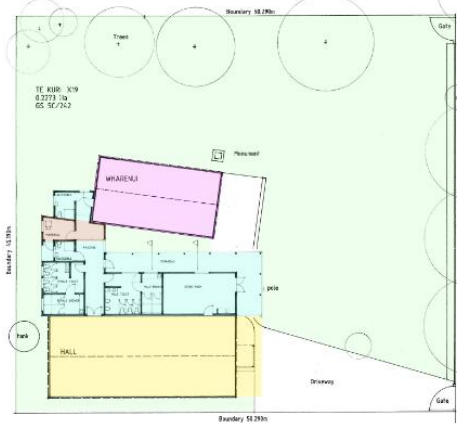
STAGE 5 – SEPTIC SYSTEM

This job is tied to the Wharepaku Project. Currently in initial Design Stages with Architects 44, AgFirst Consultants and Gisborne District Council. 2 options are being looked at are;
1. Self-contained septic system with effluent field bordering Muriwai Lagoon and sand dunes.
2. Connection into town sewer

STAGE 6 – COMPLEX UPGRADE

This will include upgrade of;
Waiari Wharenuui
Wharekai
Kitchen
Toilets
Demolition/replacement of 'barn'

Site Plan



WHENUA
WHANAU
KAITIAKI



ARCHITECTS IN LIMITED
44 CHILDRERS ROAD | P O BOX 1241 | GISBORNE
P 06 867 9622 | F 06 867 9622
www.a44.co.nz | info@a44.co.nz

CLIENT	MURUWAI MARAE TRUSTEES
PROJECT	TAMANUIRI ROAD MURUWAI
DATE	14/04/2012
SCALE	1:200
DATE	12/36
PROJECT NO.	A1-1200



44 Childers Road
PO Box 1241
Gisborne, 4040

Phone 06 867 9622
architects@A44.co.nz
www.A44.co.nz